

Date of Issue : July 22<sup>nd</sup> 2011

Issued by Citizen Watch Co., Ltd. Q&Q Division

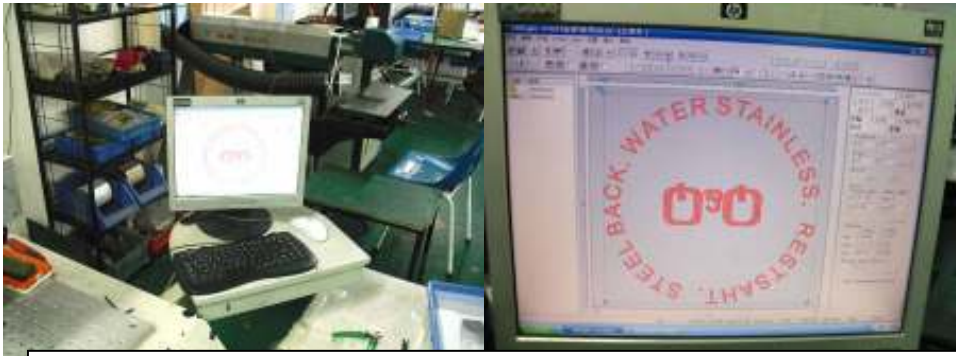
## Q&Q Anti-Counterfeit-Action

Target Factory	Shenzhen Jing Mi Da Carve Centre
	No. 1, 2/F, Building A, No. 171, First Gushu Road, Xixiang Town, Bao'an District Shenzhen, P/R/China
Background of the case	June 29 <sup>th</sup> 2011 Information was received from our investigator that this target was producing watch back cases bearing "Q&Q" trademark, and approximately 2,000 pcs of "Q&Q" watch back cases were in stock. We confirmed with Bao'an MSA officials that these watch back cases could be considered as counterfeit watch back cases of "Q&Q". Therefore, the raid was conducted on June 30 <sup>th</sup> 2011.
Result of the raid action	Confiscated counterfeit Q&Q watch back cases 2,000 pcs

Exterior of the target



Counterfeit watch back cases found in Stock



Counterfeit watch back case Sample pattern on the computer

Seizure being moved away



深圳市市场监督管理局  
 委托鉴定书  
 深市监字[2011]361号

本局在调查处理有关涉嫌违法案件中，需要对下列物品进行鉴定，特委托贵单位进行鉴定。

委托鉴定事项：下列表所列事项  
 委托鉴定相关材料送交材料清单：

名称	规格(型号)单位	数量	备注
表壳盖	1个	2011	附090号样品
	以不空白		

请贵单位在出具的鉴定书中说明鉴定过程，并对鉴定单位提供的材料、鉴定时依据和使用的科学技术手段、鉴定的过程、明确的鉴定结论，并说明与涉案人认定的事实认定情况及鉴定人签字和部门公章盖章。

联系人：林少强 张泽泉 联系电话：2770826

2011年 月 日

本文件一式三份，一份送检，一份留档，一份送外局或复印。

Confiscation list